

THE COMMUNICATION MENTORS' NETWORK OF SOUTHEASTERN PA

Our Supporters & Allies:

Access Services
Altec
Barber Resources
BARC
Bucks County Dept. of MH/MR
Delaware County OMR
Camphill Soltane
Community Options
County Commissioners' Association of PA
Delta Community Supports
Elwyn
Goodwill Industries
Greenwich Services
Growth Horizons, Inc.
Hap, Inc.
Holy Family College
Horizon House
Indian Creek Foundation
KenCrest Services
Keystone Service Systems
Lenape Valley Foundation
LifePath
Montgomery County Dept. of MH/MR



Our Supporters & Allies (cont.):

Northwestern Human Services
PATH
PDDC
Penn Foundation
Pennel MH Center
Philadelphia Coordinated Health Care
Philadelphia DBH/MRS
PIER
Resources for Human Development
SPIN
Sunny Days Early Childhood Services

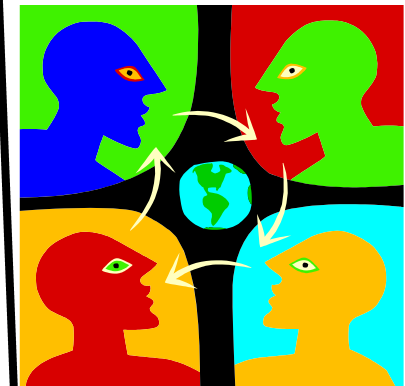
THE COMMUNICATION MENTORS'
NETWORK OF SOUTHEASTERN PA

1220 Valley Forge Road, Unit 17
Box 206
Valley Forge, PA 19481-0206
Phone: 610-935-6627

E-mail: mentorsepa@networksfortraining.org
www.communicationmentors.org

(A project of Networks for Training and Development, Inc)

THE COMMUNICATION MENTORS' NETWORK OF SOUTHEASTERN PA



supporting effective
communication for
everyone.....

THE COMMUNICATION MENTORS' NETWORK OF SOUTHEASTERN PA

The "Communication Crisis"

A well-known and well documented problem plaguing a large majority of people with disabilities is the issue of decreased functional communication skills. For some, this means a general difficulty being understood by those outside of primary family members and familiar others. This leads to decreased opportunities for choice-making, decision-making, relationship building, community access, and health / safety concerns. For others, this is much more serious.... virtually no recognized means of expressing basic wants, needs, choices, complaints, concerns, pain, or joy.



What we can offer...

- * Assessments with people who have limited or unrecognized communication methods to explore possible systems and strategies to be more fully expressive.
- * Recommendations of devices, supports, adaptations, & accommodations for people in need of upgrading their current communication systems, techniques, & strategies.
- * Group and individualized training in current trends and options in augmentative and alternative communication (AAC).
- * Assistance to teams in finding ways to make communication a more common and natural part of the person's life, increasing choice, and opportunities for community involvement.



We have much first-hand experience in the power of combining a belief in competence, a healthy skepticism of what previous labels actually mean about a person, and thinking through what support might actually be supportive. Add to this a gradually growing knowledge-base of the available technology and systems which might be used to help people more fully communicate. Story after story of change and empowerment has come from this commitment to communication and this, in turn, has committed us further to believing that:



- * everyone already communicates,
- * often we as supporters and loved ones don't "hear" or fully respect what is communicated,
- * we all can learn better how to more fully support everyone's communication, and
- * people can find other systems and / or technology to enhance, supplement, or provide alternative means of communication.

THE COMMUNICATION MENTORS' NETWORK OF SOUTHEASTERN PA